

Glamour

VISION[®]
BLINDS
Experience of new lifestyle



Technical Specifications



Range Name	JACQUARD BLACKOUT
Coating Layer	4PASS COATING
Composition	45% POLYESTER 55% FOAM
Fabric Weight	350gsm+/-10gsm
Fabric Thickness	0.5 mm+/-5%
Fabric Width	310 cm
Treatment	Blackout Coating
No. Of Shaded	7
Blackout Rate	100%
Cleaning	Conditional Cleaning With Vacuum Cleaner Or Wet Cloth



Tear & Hole Resistant



Scratch Resistant



Child Safe



Pet Resistant



Long Life



No Oil, Grease



Clean



100% Blackout

Suede

3001 To 3007

3001

3002

3003

3004

3005

3006

3007



Technical Specifications



Range Name	JACQUARD BLACKOUT
Coating Layer	4PASS COATING
Composition	45% POLYESTER 55% FOAM
Fabric Weight	350gsm+/-10gsm
Fabric Thickness	0.5 mm+/-5%
Fabric Width	310 cm
Treatment	Blackout Coating
No. Of Shaded	8
Blackout Rate	100%
Cleaning	Conditional Cleaning With Vacuum Cleaner Or Wet Cloth



Cleaned & Ironed
Regularly



Stain-Resistant



Anti-Static



Anti-Dust



Anti-Static



Anti-Static



Anti-Static



Anti-Static

Anchor

3011 To 3018



3011

3012

3013

3014

3015

3016

3017

3018



Technical Specifications



Range Name	JACQUARD BLACKOUT
Coating Layer	4PASS COATING
Composition	45% POLYESTER 55% FOAM
Fabric Weight	350gsm+/-10gsm
Fabric Thickness	0.5 mm+/-5%
Fabric Width	310 cm
Treatment	Blackout Coating
No. Of Shaded	5
Blackout Rate	100%
Cleaning	Conditional Cleaning With Vacuum Cleaner Or Wet Cloth



Treat & Seal Solution



30 Year



1200 Lbs



Variable



No Nails



No Off-Board



Green



100% Blackout

Fleece

3021 To 3025



3021

3022

3024

3025



Technical Specifications



Range Name	JACQUARD BLACKOUT
Coating Layer	4PASS COATING
Composition	45% POLYESTER 55% FOAM
Fabric Weight	350gsm+/-10gsm
Fabric Thickness	0.5 mm+/-5%
Fabric Width	310 cm
Treatment	Blackout Coating
No. Of Shaded	5
Blackout Rate	100%
Cleaning	Conditional Cleaning With Vacuum Cleaner Or Wet Cloth



Thermal Insulation



Fire-Res.



Child Safe



Washable



Long Life



Half-Drill



Green



100% Blackout

Spades
3031 To 3035



3031



3032

3033

3034

3035



Technical Specifications



Range Name	JACQUARD BLACKOUT
Coating Layer	4PASS COATING
Composition	45% POLYESTER 55% FOAM
Fabric Weight	350gsm+/-10gsm
Fabric Thickness	0.5 mm+/-5%
Fabric Width	310 cm
Treatment	Blackout Coating
No. Of Shaded	5
Blackout Rate	100%
Cleaning	Conditional Cleaning With Vacuum Cleaner Or Wet Cloth



Can be Cleaned With Wet Cloth



Can be Cleaned



Child Safe



Remote Control



Not Suitable for Sharp Objects



Can be Cleaned

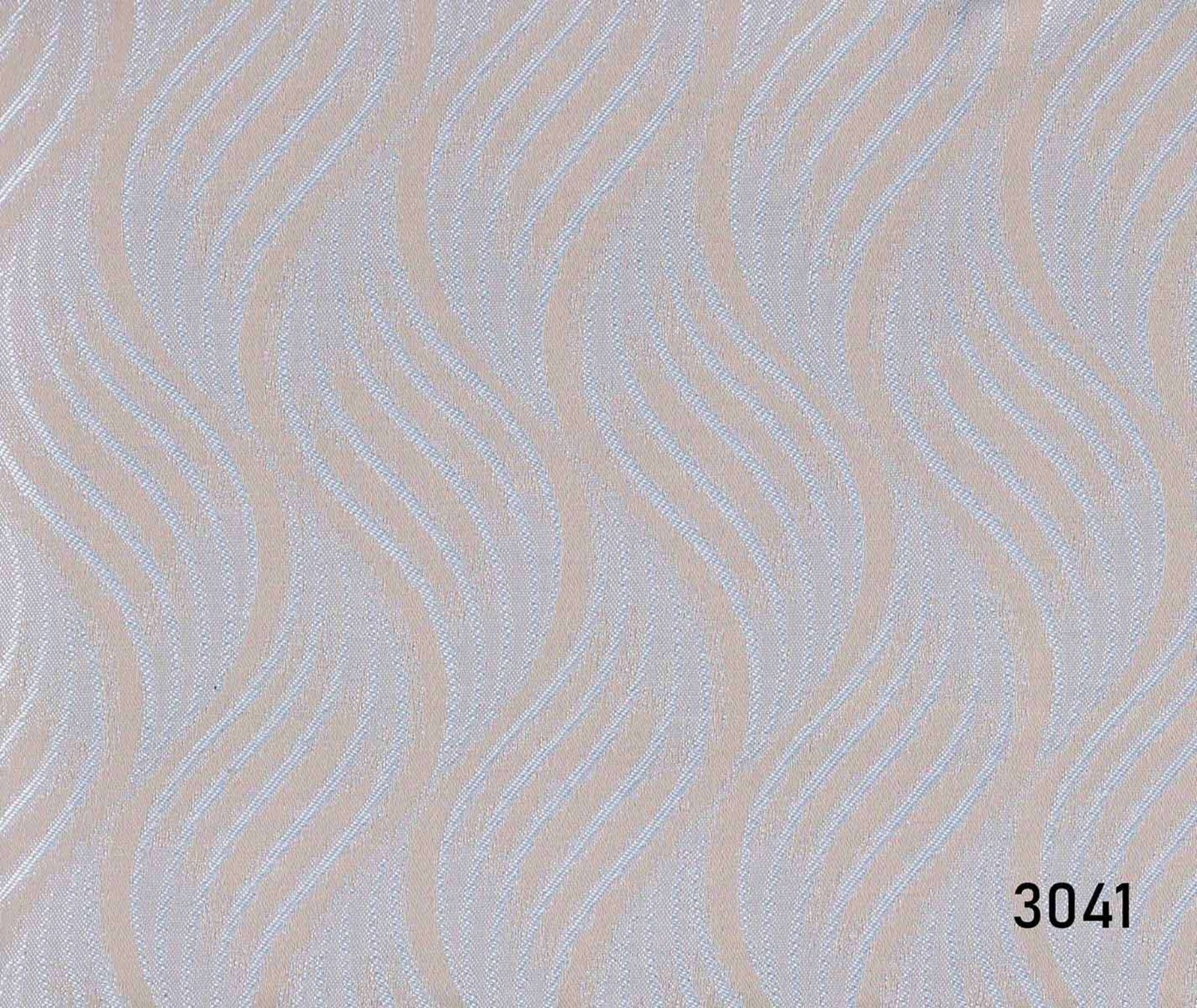


Recycled



100% Blackout

Tweed
3041 To 3045



3041



3042

3043

The image shows a close-up of a fabric with a repeating wavy pattern. The pattern consists of multiple layers of thin, dark, wavy lines that create a sense of depth and texture. The overall color palette is neutral, ranging from light beige to a slightly darker, muted brown. The fabric has a fine, woven texture.

3044

The image shows a close-up of a fabric with a repeating wavy pattern. The pattern consists of interlocking, undulating shapes that resemble stylized waves or a marbled effect. The color palette is composed of various shades of red, from a deep, dark red to a lighter, more vibrant red, set against a muted, earthy brown background. The texture of the fabric is visible, showing a fine, woven structure. In the bottom right corner, the number '3045' is printed in a bold, black, sans-serif font.

3045



Technical Specifications



Range Name	JACQUARD BLACKOUT
Coating Layer	4PASS COATING
Composition	45% POLYESTER 55% FOAM
Fabric Weight	350gsm+/-10gsm
Fabric Thickness	0.5 mm+/-5%
Fabric Width	310 cm
Treatment	Blackout Coating
No. Of Shaded	6
Blackout Rate	100%
Cleaning	Conditional Cleaning With Vacuum Cleaner Or Wet Cloth



Floral & More
Influences



No Rip



Child Safe



Washable



100% No



No Cut



Recycle



100%
Blackout

Floral

3051 To 3056

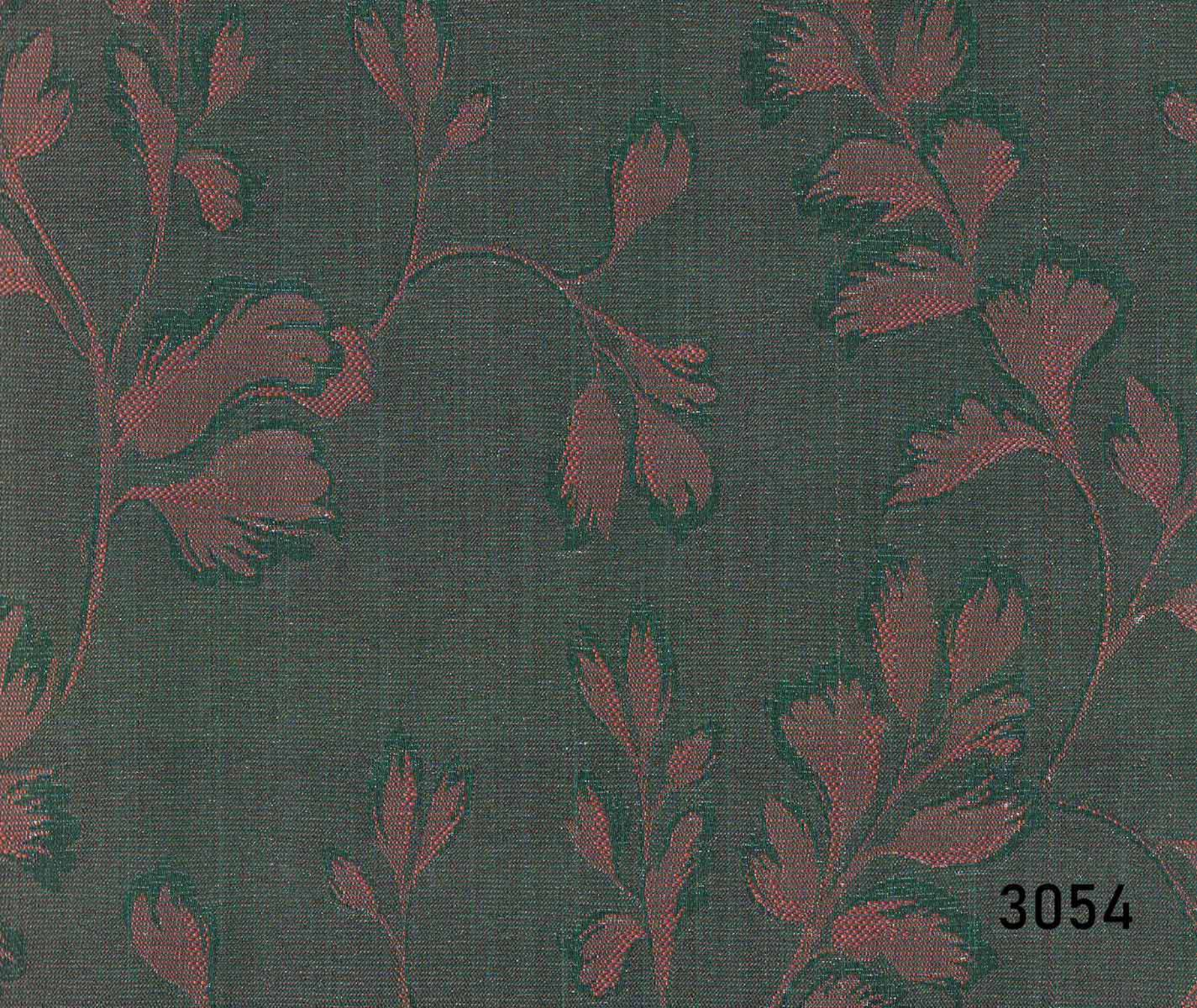
3051



3052



3053



3054



3055



3056



Technical Specifications



Range Name	JACQUARD BLACKOUT
Coating Layer	4PASS COATING
Composition	45% POLYESTER 55% FOAM
Fabric Weight	350gsm+/-10gsm
Fabric Thickness	0.5 mm+/-5%
Fabric Width	310 cm
Treatment	Blackout Coating
No. Of Shaded	7
Blackout Rate	100%
Cleaning	Conditional Cleaning With Vacuum Cleaner Or Wet Cloth



Stain & Spot Resistant



Eco-Friendly



20000 Hours



Fire Retardant



Lightfast



No-Fluff



Dyeable

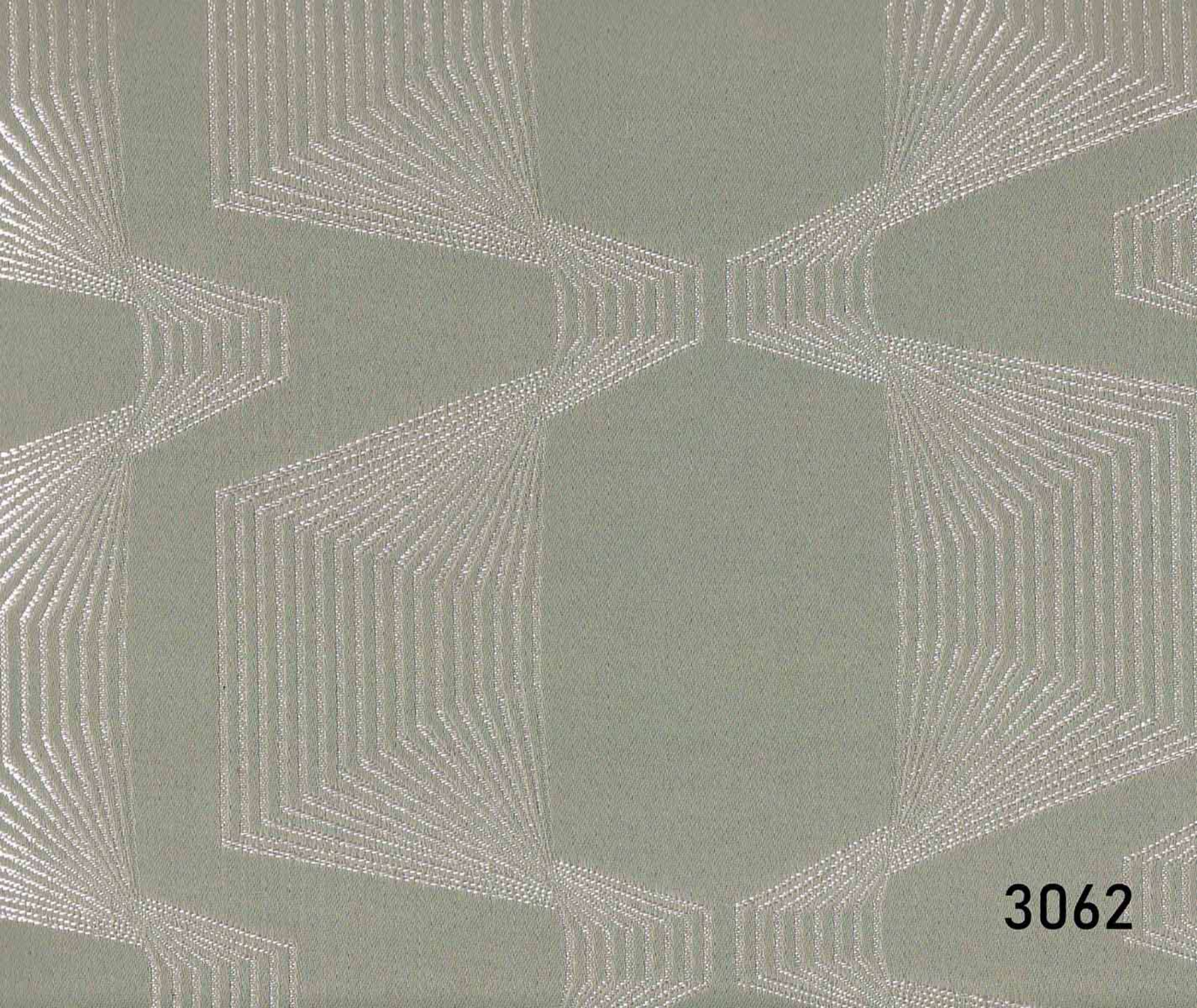


100% Blackout

Diamond
3061 To 3067



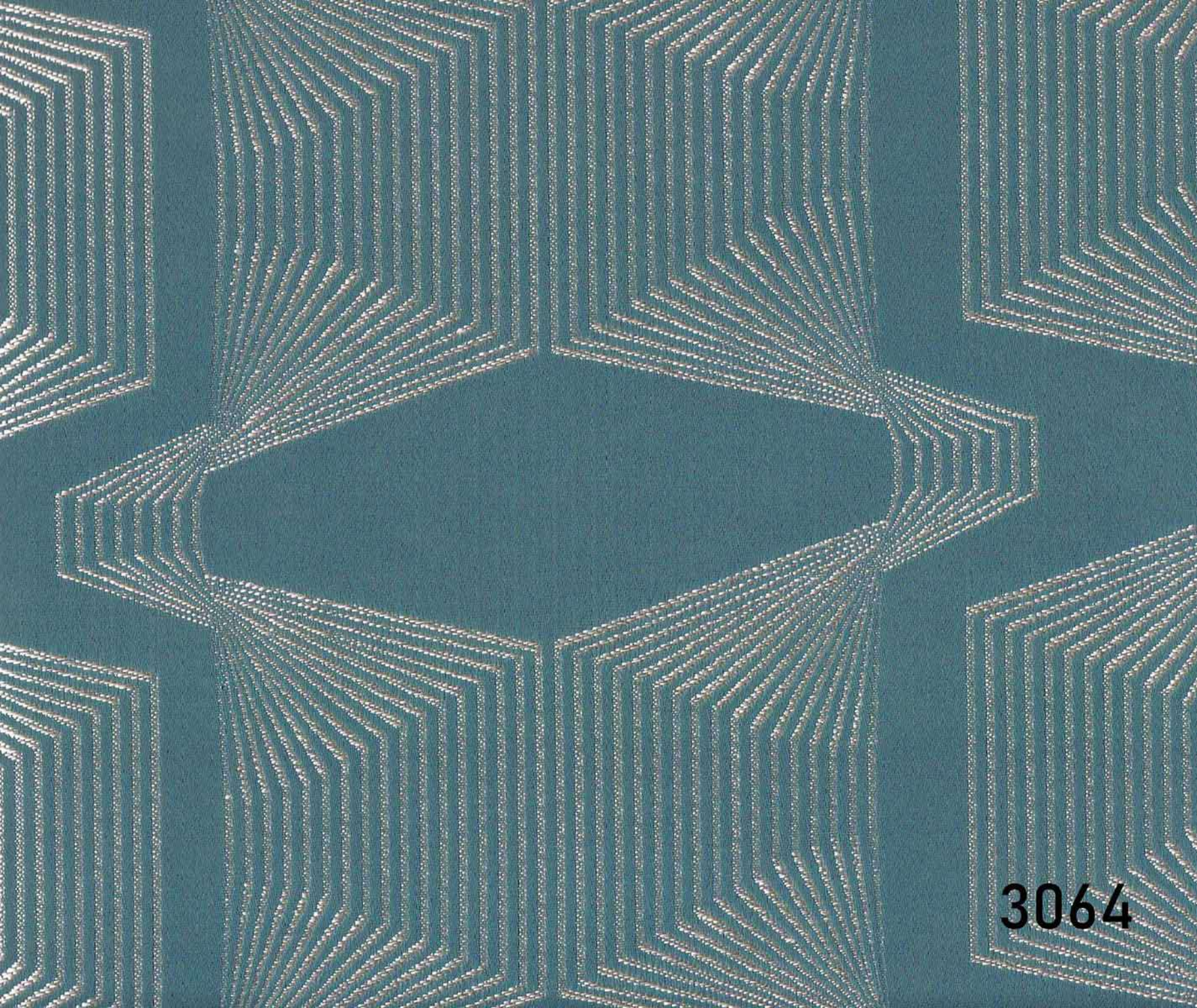
3061



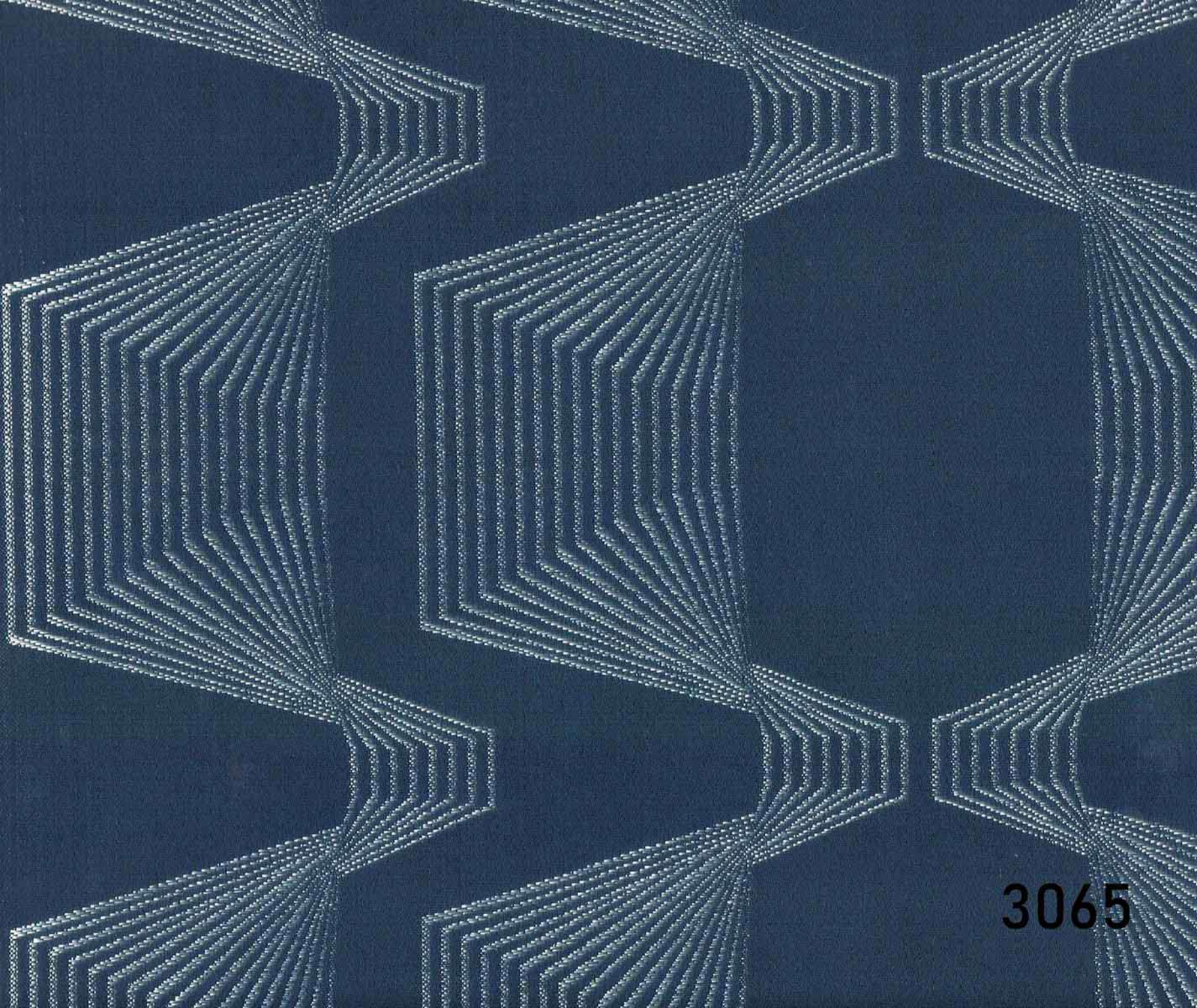
3062



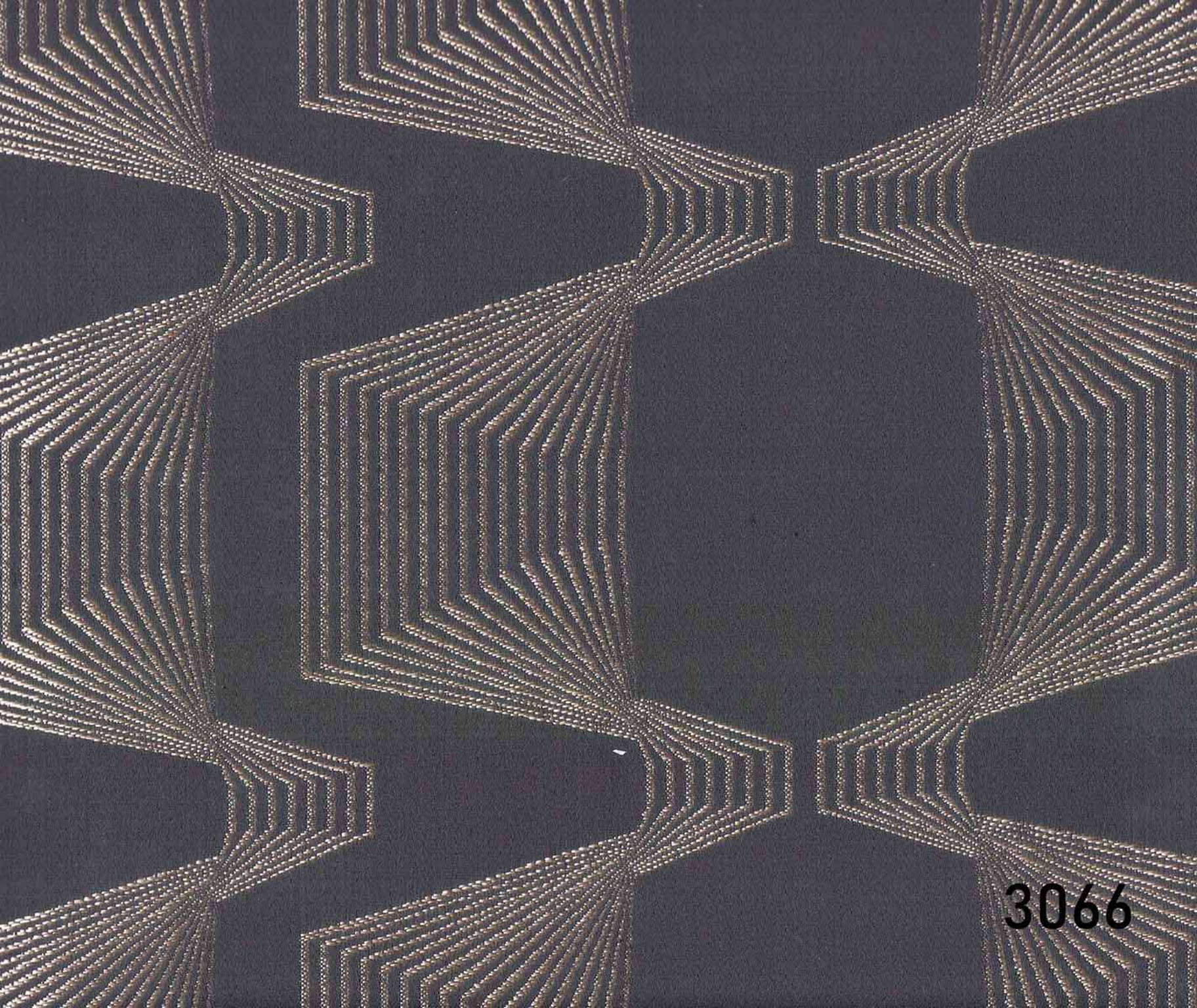
3063



3064



3065



3066



3067